

ENGL CUSTOM SHOP ORDER

PURCHASE ORDER NUMBER



DEALER CONTACT

AMPLIFIER S/N

1) AMP MODEL

2) CABINET MODEL

3) TOLEX COLOR

4) CORNERS

5) KNOBS

6) ILLUMINATION

7) NOTES

CUSTOM OPTIONS

1) **Amp Model:** Please select your preferred amplifier.

2) **Cabinet Model:** Please select your preferred cabinet.

3) **Tolex Colors:** Please select one of the following colors.
Cabinet Color must match the Amp.

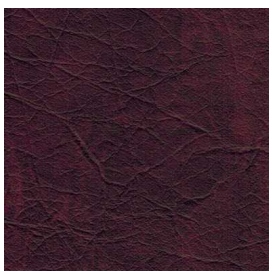
BLACK SNAKESKIN



RED SNAKESKIN



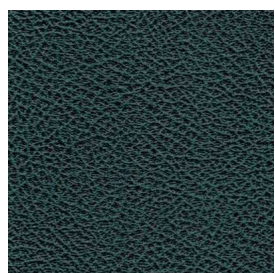
RETRO RED



PURPLE BRONCO



GREEN BRONCO



WHITE BRONCO



RED BRONCO



SILVER BRONCO



4) **Corners:** Please choose CHROME (DEFAULT) or BLACK corners.

5) **Knobs:** Please select the type of knobs you want to have installed.

- x CHICKEN HEAD ENGL, CHICKEN HEAD and CHICKEN HEAD ANODIZED SILVER are not compatible with the models **E600 Ironball Combo**, **E610II Savage 120 Mark II**, **E630II Savage 60 Mark II**, **E670FE Special Edition**.
It is not possible to customize the knobs on these models, no matter if selected.

Chicken Head ENGL – default configuration on the following models:



- E633 Fireball 25
- E635 Fireball 100
- E645II Powerball 100
- E656 Steve Morse Signature

Diameter: approx. 32mm

Chicken Head – default configuration on the following models:

- E650 Ritchie Blackmore Signature



Diameter: approx. 32mm

Chicken Head Anodized Silver – default configuration on the following models:



- E651 Artist Edition 100
- E653 Artist Edition 50
- E646 Victor Smolski Signature
- E766 Marty Friedman Signature

Diameter: approx. 32mm

Pointer Knob ENGL - default configuration on the following models:



- E610II Savage 120 Mark II
- E630II Savage 60 Mark II

Diameter: approx. 21mm

Fluted Knob ENGL - default configuration on the following models:



- E600 Ironball Combo
- E606 Ironball
- E606SE Ironball Special Edition

Diameter: approx. 19mm

6) Illumination: You can choose between the colors red, blue and green instead of the stock color. The Illumination includes the LED Tube Illumination and the color of the Power Switch or the respective status LED.